

VX Range - Axial Extract Fans

Key Features

Type: Axial extract fans.

Application: Domestic bathrooms, shower rooms and toilets.

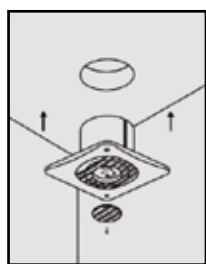
Hole diameter:

VX100: 110mm

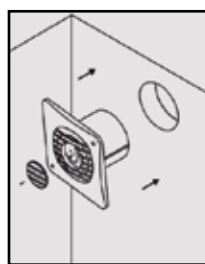
VX120: 125mm

VX150: 155mm

Ceiling Installation:



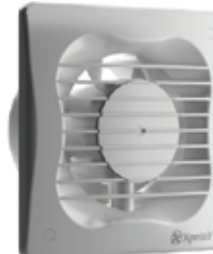
Wall Installation:



VX100



VX120



VX150



XPELAIR VX Range

The XPELAIR VX range of single speed axial fans are compact and easy to fit for domestic applications. The fan grilles are very modern and discreet.

These fans are suitable for a wide range of applications including bathrooms, shower rooms and toilets.

The XPELAIR VX fans are suitable for wall mounting as well as ceiling

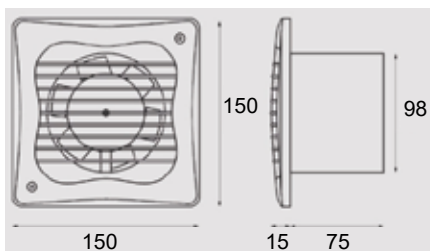
mounting, but it cannot be window mounted.

The one piece construction of these fans make installation very simple and lowers the risk of fan vibration.

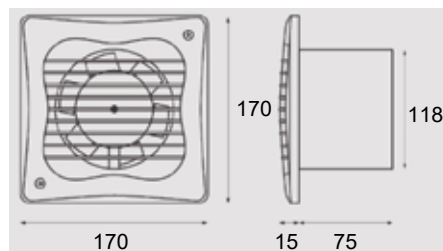
All VX models are IP55 rated. They are all suitable for 220-240V 50Hz mains operation and class B insulation for operation in ambient temperatures of up to 40°C and are fitted with a thermal cut out.

Dimensions (mm)

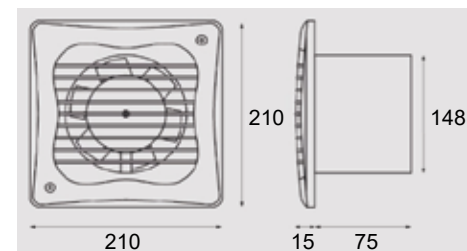
VX100



VX120



VX150



Specifications

	VX100	VX120	VX150
UK reference number:	93224AW	93228AW	93226AW
Remote switch (not supplied):	X	X	X
Max. airflow (m ³ /h):	73	137	222
Max. airflow (l/s):	20	38	62
Electrical power rating (W):	16	23	25
IP rating:	IP55	IP55	IP55